



Warrant Data Exchange NCSC Grant Implementation Design

DESIGN DOCUMENT

Version 1.0, 05/22/2013

Revision History

| Version | Date | Author(s) | Revision Notes |
|---------|------------|---------------------|------------------|
| 1.0 | 05/22/2013 | Janardhan Muduganti | Initial version. |
| | | | |
| | | | |
| | | | |
| | | | |

Table of Contents

| | | |
|----------|---|----------|
| 1 | INTRODUCTION | 1 |
| 1.1 | System Overview..... | 1 |
| 1.2 | Scope | 1 |
| 1.2.1 | In Scope | 1 |
| 2 | DESIGN CONSIDERATIONS..... | 1 |
| 2.1 | Critical Requirements | 1 |
| 2.2 | Dependencies..... | 2 |
| 3 | SYSTEM IMPLEMENTATION SPECIFICATION | 2 |
| 3.1 | Business Process Model | 2 |
| 3.1.1 | Warrant Data Exchange Process - SubmitWarrant | 2 |
| 3.1.2 | Warrant Data Exchange Process - ReceiveWarrantReply | 3 |
| 3.1.3 | Warrant Data Exchange Process - SubmitWarrantCorrection..... | 4 |
| 3.1.4 | Warrant Data Exchange Process - ResubmitUnprocessedWarrants | 4 |
| 3.1.5 | Alternative Paths | 4 |
| 3.1.5.1 | NCSC Service Failures..... | 4 |
| 3.2 | NCSC Grant Project ISB Detailed Design..... | 4 |
| 3.2.1 | NCSC Webservice..... | 5 |
| 3.2.2 | NCSC Service Components..... | 5 |

1 Introduction

1.1 System Overview

In 2005, at the direction of the Governor's Office, the Pennsylvania Justice Network (JNET), the Pennsylvania State Police (PSP), and the Administrative Office of Pennsylvania Courts (AOPC), began to develop an electronic warrant issuance process for all Magisterial District Judge and Common Pleas warrants. This directive was issued in response to concerns that approximately 60% of all warrants issued statewide were not being entered into state and federal warrant repositories. The primary objectives of this project were to collect, secure, automate, and enter all warrants into PSP's Commonwealth Law Enforcement Assistance Network (CLEAN) and the FBI's National Crime Information Center (NCIC) at the time of Judicial approval. Through this process, law enforcement personnel benefit in two significant ways; a reduction in data entry at the time of issuance, and the knowledge of all active warrants for subjects they encounter.

From a system perspective, all of the data mapping, data scrubbing, and data conversion required to ensure successful processing at NCIC is carried out on PSP-maintained components. Recently, JNET has been asked to migrate as much of that functionality to its system components, and to assess what changes can be made to improve the rate of successful automated entry of valid warrants data into NCIC and CLEAN. Around the same time (late Summer 2011), JNET applied for a grant from the National Center for State Courts (NCSC) who were seeking State participation in the development of a Warrants and Disposition Management Toolkit. In late April 2012, JNET Learned that it had been one of the States awarded a grant from NCSC.

1.2 Scope

1.2.1 In Scope

The primary focus of this document is the components JNET will need to develop using webmethods.

The AOPC and PSP components are not discussed in detail.

2 Design Considerations

2.1 Critical Requirements

1. Successfully migrate the data mapping, data scrubbing and data conversion functionality of the automated warrants data transfer system from PSP system components to JNET system components.
2. Improve the rate of successful initial entry of warrants into NCIC and CLEAN from the current level.
3. Improve the rate of successful cancelations of warrants from NCIC and CLEAN from the current level.
4. Add the capability to return a NIC to AOPC when warrant data is manually entered by Servicing ORIs.
5. Improve reporting so that local stakeholders can analyze and take action on reasons for warrants data rejections.

6. Create Warrant Correction UI that will allow authorized users to correct and resubmit rejected warrant entries.

2.2 Dependencies

The design of this system reuses the following JNET system components:

1. JNET Utility Services (JUS)
2. JNET Error Handling Framework (JEHF)
3. JNET Auditing Service (JAS)
4. JNET Common Services

3 System Implementation Specification

3.1 Business Process Model

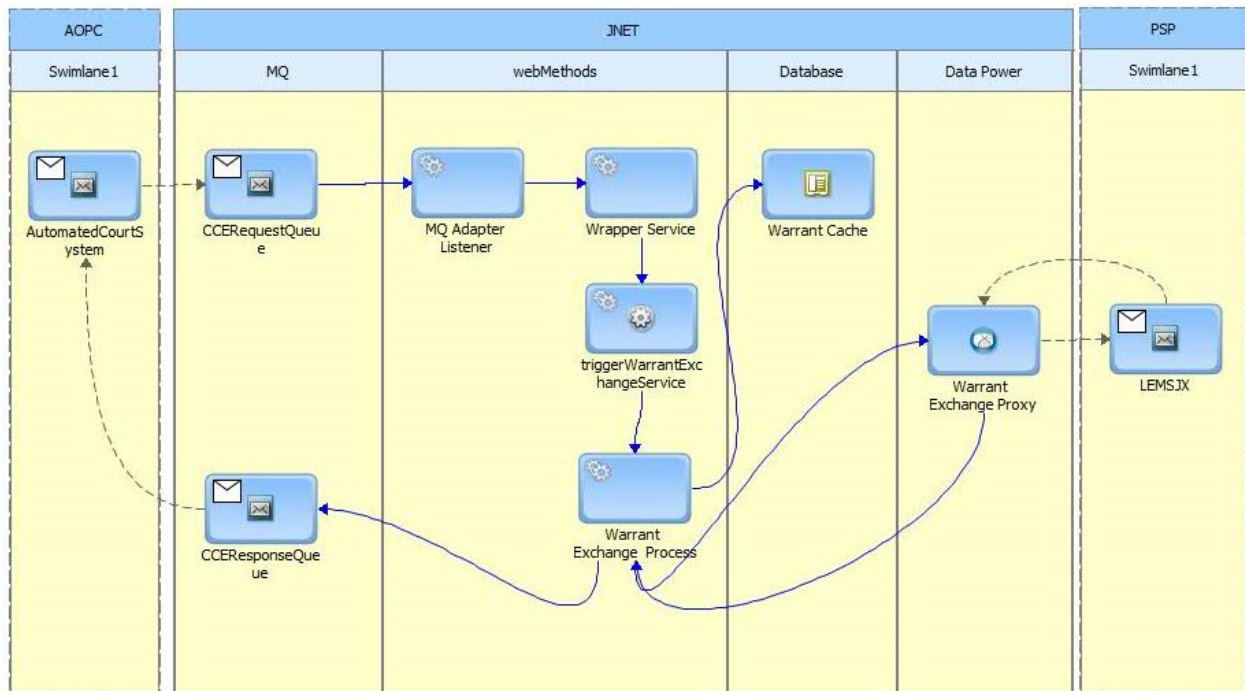


Figure 2 – Warrant Data Exchange process diagram

Warrant Exchange Process consists of four operations SubmitWarrant, ReceivewarrantReply, SubmitWarranCorrection and ResubmitUnprocessedWarrants

3.1.1 Warrant Data Exchange Process - SubmitWarrant

1. AOPC publishes CCERequest message to the JNET MI.
2. MQ Listener listens to new messages on Inbound queue 'CCE.INBOUND.QUEUE' (JNET MI) and invokes wrapper service.
3. If CCERequest is **criminal** warrant it is published to broker..

-
- a. /soap:Envelope/soap:Header/was:Action =
'http://jnet.state.pa.us/jxdm/aopc/CourtCaseEvent/WarrantPublish'
 - b. /soap:Envelope/soap:Header/wsa:ReferenceParameters/ref:DocketTypeText =
'CRIMINAL'
4. 'trgrCCEWarrant' invokes SubmitWarrant operation.
 5. CCERequest message transformed to WarrantXL message using XSLT for simplified UI processing.
 6. SubmitWarrant operation Extracts WarrantNumber, ORI, WarrantType, CountyCode and ActionType from CCERequest.
 7. Cache WarrantNumber, ORI, WarrantType, CountyCode, ActionType, WarrantXML and original CCERequest into DB with status 'Pending'.
 8. Call SubmitWarrant web service on the DataPower proxy.
 - WarrantCacheID = WarrantCacheID returned from the CacheWarrant stored procedure.
 - WarrantCCE = CCERequest message
 - UpdateIndicator = 'false'
 9. Data power sends the warrant to LEMSJX and receives reply status.
 10. Call UpdatePublishStatus() stored procedure with the response data in WarrantReply.
 - WarrantNumber = WarrantReply.WarrantID or WarrantCacheID =
WarrantReply.WarrantCacheID
 - WarrantType = WarrantReply.WarrantType
 - ReplyStatus = WarrantReply.ReplyStatus
 - RejectType = WarrantReply.RejectType
 - RejectReason = WarrantReply.ErrorMessage
 11. If reply status is 'FAILURE', send CCE Fault back to AOPC.

3.1.2 Warrant Data Exchange Process - ReceiveWarrantReply

1. Warrant exchange service receives & saves warrant response and response status in the Warrant cache. response to AOPC.
2. If warrant reply status = ACCEPT & WarrantType = ENTRY, ReceiveWarrantReply operation adds the NIC number to the CCE
3. If warrant reply status = REJECT & WarrantType = ENTRY and the ErrorMessage contains 'ON FILE', ReceiveWarrantReply operation adds on file NIC, on file WNO to the CCE response to AOPC.

4. If warrant reply status != RETRY & WarrantType != SUPPLEMENT, ReceiveWarrantReply operation generates CCR Reply or CCE Fault message.
 - a. Places CCE Response on CCE Reply queue.
5. Calls CacheWarrantReply() stored procedure.
6. IF Warrant reply Status == 'ACCEPT' and WarrantType == 'ENTRY' THEN
Call SubmitSupplement()

3.1.3 Warrant Data Exchange Process - SubmitWarrantCorrection

1. Get WarrantID and EditUserID from request.
2. Call LockWarrant stored procedure with WarrantID and EditUserID to insure warrant record is locked by the user
3. Call GetWarrantCCE stored procedure to get the last CCE message sent to PSP.
4. Merge the updates in the WarrantXML with the CCE message.
5. Call SubmitWarrant operation.

3.1.4 Warrant Data Exchange Process - ResubmitUnprocessedWarrants

1. Call GetUnprocessedWarrants stored procedure to get a list of warrants ready to be Resubmitted.
2. Follow below steps for all warrants:
 - a. Call GetWarrantCCE stored procedure to get the latest CCE message.
 - b. Call SubmitWarrant() on the Warrant Exchange Proxy to resubmit the warrant to PSP.
 - c. Call UpdateWarrantStatus stored procedure to update the reply status returned by PSP.
3. IF the reply status == REJECT THEN, generate a CCE Fault message.
 - A. Put the CCE Fault message on the CCE Reply Queue.

3.1.5 Alternative Paths

3.1.5.1 NCSC Service Failures

If the NCSC service encounters an error, it will raise an exception which will cause the NCSC WSD to return a SOAP fault to the client consumer. One exception to this rule is audit log failures. Audit log failures will be recorded in the error log but processing will be allowed to continue on the response.

3.2 NCSC Grant Project ISB Detailed Design

NCSC service is a WSDL first webservice provider and is generated by using the NCSC IEPD wsdl WarrantExchange.wsdl.

3.2.1 NCSC WebService

| | |
|--------------------|---|
| Service Name | NCSC |
| Type | WSD |
| Package Name | JNET_Process_NCSC |
| Handler | serviceHandler_provider_saml |
| Binders | NCSCSOAPBinding |
| SOAP Version | SOAP 1.1 Protocol |
| SOAP Binding Style | Document |
| SOAP Binding Use | Literal |
| Operations | SubmitWarrant, ReceiveWarrantReply, and SubmitWarrantCorrection |

3.2.2 NCSC Service Components

| Component Name | SubmitWarrant |
|------------------------|---|
| Type | Flow |
| Service Qualified Path | JNET_Process_Address_Search.endpoints.provider.Address_Search_services: GetPersonSearchCriteria |
| Input Data | JNET_Process_Address_Search.endpoints.provider.Address_Search_docTypes: docTypeRef_m_GetPersonSearchCriteriaType |
| Output Data | JNET_Process_Address_Search.endpoints.provider.Address_Search_docTypes: docTypeRef_m_GetPersonSearchCriteriaResponseType |
| Description | GetPersonSearchCriteria is one of the operations of Address_Search provider webservice. This operation used to query primary systems based on the user role to retrieve the person information summary. |

| Component Name | ReceiveWarrantReply |
|----------------|---------------------|
| Type | Flow |

| | |
|------------------------|--|
| Service Qualified Path | JNET_Process_Address_Search.endpoints.provider.Address_Search_.services: GetPersonInformation |
| Input Data | JNET_Process_Address_Search.endpoints.provider.Address_Search_.docTypes: docTypeRef_m_GetPersonInformationType |
| Output Data | JNET_Process_Address_Search.endpoints.provider.Address_Search_.docTypes: docTypeRef_m_GetPersonInformationResponseType |
| Description | GetPersonInformation is one of the operations of Address_Search provider webservice. This operation is used to get the person detailed information from all the datasources which are participating in NCSC application. |

| Component Name | SubmitWarrantCorrection |
|------------------------|---|
| Type | Flow |
| Service Qualified Path | JNET_Process_Address_Search.process:getPersonSearchCriteria |
| Input Data | docTypeRef_m_GetPersonSearchCriteriaType |
| Output Data | docTypeRef_m_GetPersonSearchCriteriaResponseType |
| Description | This is the top level service to perform whole bussiness logic for GetPersonSearchCriteria webservice operation |

| Component Name | getPersonInformation |
|------------------------|--|
| Type | Flow |
| Service Qualified Path | JNET_Process_Address_Search.process:getPersonInformation |
| Input Data | docTypeRef_m_GetPersonInformationType |
| Output Data | docTypeRef_m_GetPersonInformationResponseType |
| Description | This is the top level service to perform whole bussiness logic for GetPersonInformation webservice operation |

| Component Name | auditGetPersonSearchCriteria |
|----------------|------------------------------|
| Type | Flow |

| | |
|------------------------|---|
| Service Qualified Path | JNET_Process_Address_Search.services.auditLog: auditGetPersonSearchCriteria |
| Input Data | GetPersonSearchCriteria , username, orgInfo |
| Output Data | insAuditLogDoc |
| Description | This flow service capture the person search criteria for auditing in auditlog database. |

| | |
|------------------------|--|
| Component Name | auditGetPersonInformation |
| Type | Flow |
| Service Qualified Path | JNET_Process_Address_Search.services.auditLog: auditGetPersonInformation |
| Input Data | GetPersonInformation, username, orgInfo |
| Output Data | insAuditLogDoc |
| Description | This flow service capture the person Infromation criteria for auditing in auditlog database. |

| | |
|------------------------|--|
| Component Name | makeSearchMetaData |
| Type | Flow |
| Service Qualified Path | JNET_Process_Address_Search.services:makeSearchMetaData |
| Input Data | requestDocument |
| Output Data | requestDocument |
| Description | This flow service prepare the metadata for search operation based on user input and user role. |

| | |
|------------------------|--|
| Component Name | getSystemsToQuery |
| Type | Flow |
| Service Qualified Path | JNET_Process_Address_Search.services:getSystemsToQuery |
| Input Data | UserAuthorizations, searchType |

| | |
|-------------|---|
| Output Data | numOfPRSystems,numOfSCSystems,scSystemNames, prSystemNames, totalsystems, numOfWorkSystems |
| Description | This flow service find out the number of systems going to be searched based on user permission to the datasources. Also finds the primary query systems and secondary query systems based on user input criteria. |

| | |
|------------------------|---|
| Component Name | insertMetaData |
| Type | Flow |
| Service Qualified Path | JNET_System_DataSources.services.wrappers:insertMetaData |
| Input Data | insertMetaDataInput |
| Output Data | insertMetaDataOutput |
| Description | This flow service inserts query metadata into the envelope caching table of DataAggregation database.This metadata is used for replying to the request service. |

| | |
|------------------------|---|
| Component Name | Data_Aggregation |
| Type | WSD |
| Service Qualified Path | JNET_Process_Address_Search.endpoints.consumer: Data_Aggregation |
| Binding | DataAggregationSoapBinding |
| Operations | QueryDataSources, PutDataQueryResults, GetAvailableResults |
| Description | This webservice consumer is created from Data Aggregation service provider on JIES server to call aggregation service operations. |

| | |
|------------------------|--|
| Component Name | DataAggregationInterface_QueryDataSources |
| Type | Flow |
| Service Qualified Path | JNET_Process_Address_Search.endpoints.consumer.Data_Aggregation_.connectors: |

| | |
|-------------|---|
| | DataAggregationInterface_QueryDataSources |
| Input Data | m:QueryDataSources, url |
| Output Data | m:QueryDataSourcesResponse, SOAP-FAULT |
| Description | This webmethods webservice connector used for calling the QueryDataSources method of DataAggregation webservice on JIES Server. |

| | |
|------------------------|---|
| Component Name | processScndrySrchQry |
| Type | Flow |
| Service Qualified Path | JNET_Process_Address_Search.services:processScndrySrchQry |
| Input Data | responseList, scSystemNames, TxnID, RequestMetadata,timeOut |
| Output Data | scResponseList |
| Description | This flow service performs the required bussiness logic for making secondary query. |

| | |
|------------------------|---|
| Component Name | removeDuplicatePerson |
| Type | Java Service |
| Service Qualified Path | JNET_Process_Address_Search.utils:removeDuplicatePerson |
| Input Data | inputPersonList |
| Output Data | outputPersonList |
| Description | This Java service performs the logic to remove the duplicate records from the result set. |

| | |
|------------------------|--|
| Component Name | getSystemList |
| Type | Java Service |
| Service Qualified Path | JNET_Process_Address_Search.utils:getSystemList |
| Input Data | userList, allowedList |
| Output Data | searchList |
| Description | This java service used to find the inersection of userList and allowed list. |

JDBC Adapter Connections:

| Component Name | conn_AOPC |
|----------------------|---|
| Type | JDBC Adapter Connection |
| Connection Alias | JNET_System_DataSources.adapters.jdbc.connections:conn_AOPC |
| Database Server Name | ujc-portaldb-test.pacourts.net |
| Database Name | tst_case_mgmt |
| Min Connections | 0 |
| Max Connections | 10 |

| Component Name | conn_DROWarrant |
|----------------------|---|
| Type | JDBC Adapter Connection |
| Connection Alias | JNET_System_DataSources.adapters.jdbc.connections:conn_DROWarrant |
| Database Server Name | pacseswarrant-db.apps |
| Database Name | PACSES |
| Min Connections | 0 |
| Max Connections | 10 |

| Component Name | conn_Data_Aggregation_Cache |
|----------------------|---|
| Type | JDBC Adapter Connection |
| Connection Alias | JNET_System_DataSources.adapters.jdbc.connections:conn_Data_Aggregation_Cache |
| Database Server Name | jdas-db.apps |
| Database Name | DataAggregation |
| Min Connections | 0 |
| Max Connections | 20 |

| Component Name | conn_ERCountyPrison |
|----------------------|---|
| Type | JDBC Adapter Connection |
| Connection Alias | JNET_System_DataSources.adapters.jdbc.connections: conn_ERCountyPrison |
| Database Server Name | doc-er-db.apps |
| Database Name | JNET-ER_DOC |
| Min Connections | 0 |
| Max Connections | 10 |

| Component Name | conn_ERCountyProbation |
|----------------------|--|
| Type | JDBC Adapter Connection |
| Connection Alias | JNET_System_DataSources.adapters.jdbc.connections: conn_ERCountyProbation |
| Database Server Name | pbbp-er-db.apps |
| Database Name | JNET_ER |
| Min Connections | 0 |
| Max Connections | 10 |

| Component Name | conn_JTS |
|----------------------|--|
| Type | JDBC Adapter Connection |
| Connection Alias | JNET_System_DataSources.adapters.jdbc.connections:conn_JTS |
| Database Server Name | juvenilewatchlist-db.apps |
| Database Name | PAJCMS |
| Min Connections | 0 |
| Max Connections | 10 |

| Component Name | conn_StateDOC |
|----------------------|---|
| Type | JDBC Adapter Connection |
| Connection Alias | JNET_System_DataSources.adapters.jdbc.connections:conn_StateDOC |
| Database Server Name | doc-db.apps |
| Database Name | JI |
| Min Connections | 0 |
| Max Connections | 10 |

| Component Name | conn_statePBPP |
|----------------------|--|
| Type | JDBC Adapter Connection |
| Connection Alias | JNET_System_DataSources.adapters.jdbc.connections:conn_statePBPP |
| Database Server Name | pbpp-db.apps |
| Database Name | PBPP |
| Min Connections | 0 |
| Max Connections | 10 |

| Component Name | conn_webCPIN |
|----------------------|--|
| Type | JDBC Adapter Connection |
| Connection Alias | JNET_System_DataSources.adapters.jdbc.connections:conn_webCPIN |
| Database Server Name | cpin-db.apps |
| Database Name | mugshot |
| Min Connections | 0 |
| Max Connections | 10 |

JDBC Adapter Services:

| Component Name | insertMetaData |
|------------------|--|
| Type | JDBC Adapter Service |
| Connection Alias | JNET_System_DataSources.adapters.jdbc.connections: |

| | |
|------------------------|---|
| | conn_Data_Aggregation_Cache |
| Service Qualified Path | JNET_System_DataSources.services.wrappers:insertMetaData |
| Input Data | insertMetaDataInput |
| Output Data | insertMetaDataOutput |
| Description | This JDBC Adapter service is used for inserting the metadata into EnvelopeCahing table. |

| Component Name | getQueryID |
|------------------------|--|
| Type | JDBC Adapter Service |
| Connection Alias | JNET_System_DataSources.adapters.jdbc.connections: conn_Data_Aggregation_Cache |
| Service Qualified Path | JNET_System_DataSources.adapters.jdbc.services.dataAggregationCache: getQueryID |
| Input Data | getQueryIDInput |
| Output Data | getQueryIDOutput |
| Description | This JDBC Adapter service is used to get the queryID from queryID mapping table. |

| Component Name | mapQueryIDToControllID |
|------------------------|--|
| Type | JDBC Adapter Service |
| Connection Alias | JNET_System_DataSources.adapters.jdbc.connections: conn_Data_Aggregation_Cache |
| Service Qualified Path | JNET_System_DataSources.adapters.jdbc.services.dataAggregationCache: mapQueryIDToControllID |
| Input Data | mapQueryIDToControllIDInput |
| Output Data | mapQueryIDToControllIDOutput |
| Description | This JDBC Adapter service is used for mapping the queryID to Database generated unique controllID. |

| Component Name | getPersonInfoFromAOPC |
|------------------------|---|
| Type | JDBC Adapter Service |
| Connection Alias | JNET_System_DataSources.adapters.jdbc.connections:conn_AOPC |
| Service Qualified Path | JNET_System_DataSources.adapters.jdbc.services.aopc: getPersonInfoFromAOPC |
| Input Data | getPersonInfoFromAOPCInput |
| Output Data | getPersonInfoFromAOPCOutput |
| Description | This JDBC Adapter service is calling the pr_CPGetFederatedAddress stored procedure on AOPC database for getting the person details. |

| Component Name | getPersonInfoFromDROWarrant |
|------------------------|--|
| Type | JDBC Adapter Service |
| Connection Alias | JNET_System_DataSources.adapters.jdbc.connections:conn_DROWarrant |
| Service Qualified Path | JNET_System_DataSources.adapters.jdbc.services.dro: getPersonInfoFromDROWarrant |
| Input Data | getPersonInfoFromDROWarrantInput |
| Output Data | getPersonInfoFromDROWarrantOutput |
| Description | This JDBC Adapter service is calling the spGetPersonInfo stored procedure on PACSES database for getting the person details. |

| Component Name | getPersonInfoFromCountyPrison |
|------------------------|---|
| Type | JDBC Adapter Service |
| Connection Alias | JNET_System_DataSources.adapters.jdbc.connections: conn_ERCountyPrison |
| Service Qualified Path | JNET_System_DataSources.adapters.jdbc.services.erPrison: getPersonInfoFromCountyPrison |
| Input Data | getPersonInfoFromCountyPrisonInput |

| | |
|-------------|---|
| Output Data | getPersonInfoFromCountyPrisonOutput |
| Description | This JDBC Adapter service is calling the spGetERDOCAddress stored procedure on JNET-DOC_ER database for getting the person details. |

| | |
|------------------------|---|
| Component Name | getPersonInfoFromCountyProbation |
| Type | JDBC Adapter Service |
| Connection Alias | JNET_System_DataSources.adapters.jdbc.connections: conn_ERCountyProbation |
| Service Qualified Path | JNET_System_DataSources.adapters.jdbc.services.erProbation: getPersonInfoFromCountyProbation |
| Input Data | getPersonInfoFromCountyProbationInput |
| Output Data | getPersonInfoFromCountyProbationOutput |
| Description | This JDBC Adapter service is calling the spGetCountyProbationPersonInformation stored procedure on JNET_ER database for getting the person details. |

| | |
|------------------------|--|
| Component Name | getPersonInfoFromJTS |
| Type | JDBC Adapter Service |
| Connection Alias | JNET_System_DataSources.adapters.jdbc.connections:conn_JTS |
| Service Qualified Path | JNET_System_DataSources.adapters.jdbc.services.jts: getPersonInfoFromJTS |
| Input Data | getPersonInfoFromJTSInput |
| Output Data | getPersonInfoFromJTSTOutput |
| Description | This JDBC Adapter service is calling the spGetJTSPersonInformation stored procedure on PAJCMS database for getting the person details. |

| | |
|-----------------------|----------------------------------|
| Component Name | getPersonInfoFromStateDOC |
| Type | JDBC Adapter Service |

| | |
|------------------------|--|
| Connection Alias | JNET_System_DataSources.adapters.jdbc.connections: conn_StateDOC |
| Service Qualified Path | JNET_System_DataSources.adapters.jdbc.services.stateDoc: getPersonInfoFromStateDOC |
| Input Data | getPersonInfoFromStateDOCInput |
| Output Data | getPersonInfoFromStateDOCOutput |
| Description | This JDBC Adapter service is sending a dynamic query to State DOC database for getting the person details. |

| | |
|------------------------|--|
| Component Name | getPersonInfoFromPBPP |
| Type | JDBC Adapter Service |
| Connection Alias | JNET_System_DataSources.adapters.jdbc.connections:conn_statePBPP |
| Service Qualified Path | JNET_System_DataSources.adapters.jdbc.services.statePBPP: getPersonInfoFromPBPP |
| Input Data | getPersonInfoFromPBPPInput |
| Output Data | getPersonInfoFromPBPPOutput |
| Description | This JDBC Adapter service is calling the spGetPBPPPersonInfo stored procedure on PBPP database for getting the person details. |

| | |
|------------------------|---|
| Component Name | getPersonInfoFromWEBCPIN |
| Type | JDBC Adapter Service |
| Connection Alias | JNET_System_DataSources.adapters.jdbc.connections:conn_webCPIN |
| Service Qualified Path | JNET_System_DataSources.adapters.jdbc.services.webcpin: getPersonInfoFromWEBCPIN |
| Input Data | getPersonInfoFromWEBCPINInput |
| Output Data | getPersonInfoFromWEBCPINOutput |
| Description | This JDBC Adapter service is calling the ADDR_RET_DETAIL stored procedure on mugshot database for getting the person details. |

| | |
|------------------------|--|
| Component Name | getPersonSmryFromWEBCPIN |
| Type | JDBC Adapter Service |
| Connection Alias | JNET_System_DataSources.adapters.jdbc.connections:conn_webCPIN |
| Service Qualified Path | JNET_System_DataSources.adapters.jdbc.services.webcpin: getPersonSmryFromWEBCPIN |
| Input Data | getPersonSmryFromWEBCPINInput |
| Output Data | getPersonSmryFromWEBCPINOutput |
| Description | This JDBC Adapter service is calling the ADDR_RET_SUM stored procedure on mugshot database for getting the person summary. |

Triggers:

| | |
|----------------------------|--|
| Component Name | trgrAOPC |
| Type | webMethods Trigger Service |
| Service Qualified Path | JNET_System_DataSources.triggers:trgrAOPC |
| Subscription Document Type | JNET_Process_Address_Search.docs:QueryDocument |
| Trigger Queue Capacity | 20 |
| Trigger Queue Refill Level | 8 |
| Acknowledge Queue Size | 2 |
| Processing Mode | Concurrent |
| Max. Threads | 4 |

| | |
|----------------------------|--|
| Component Name | trgrDPW |
| Type | webMethods Trigger Service |
| Service Qualified Path | JNET_System_DataSources.triggers:trgrDPW |
| Subscription Document Type | JNET_Process_Address_Search.docs:QueryDocument |

| | |
|----------------------------|------------|
| Trigger Queue Capacity | 20 |
| Trigger Queue Refill Level | 8 |
| Acknowledge Queue Size | 2 |
| Processing Mode | Concurrent |
| Max. Threads | 4 |

| Component Name | trgrDROWarrant |
|----------------------------|---|
| Type | webMethods Trigger Service |
| Service Qualified Path | JNET_System_DataSources.triggers:trgrDROWarrant |
| Subscription Document Type | JNET_Process_Address_Search.docs:QueryDocument |
| Trigger Queue Capacity | 20 |
| Trigger Queue Refill Level | 8 |
| Acknowledge Queue Size | 2 |
| Processing Mode | Concurrent |
| Max. Threads | 4 |

| Component Name | trgrERPrison |
|----------------------------|--|
| Type | webMethods Trigger Service |
| Service Qualified Path | JNET_System_DataSources.triggers:trgrERPrison |
| Subscription Document Type | JNET_Process_Address_Search.docs:QueryDocument |
| Trigger Queue Capacity | 20 |
| Trigger Queue Refill Level | 8 |
| Acknowledge Queue Size | 2 |
| Processing Mode | Concurrent |
| Max. Threads | 4 |

| Component Name | trgrERProbation |
|----------------|-----------------|
|----------------|-----------------|

| | |
|----------------------------|--|
| Type | webMethods Trigger Service |
| Service Qualified Path | JNET_System_DataSources.triggers:trgrERProbation |
| Subscription Document Type | JNET_Process_Address_Search.docs:QueryDocument |
| Trigger Queue Capacity | 20 |
| Trigger Queue Refill Level | 8 |
| Acknowledge Queue Size | 2 |
| Processing Mode | Concurrent |
| Max. Threads | 4 |

| Component Name | trgrJTS |
|----------------------------|--|
| Type | webMethods Trigger Service |
| Service Qualified Path | JNET_System_DataSources.triggers:trgrJTS |
| Subscription Document Type | JNET_Process_Address_Search.docs:QueryDocument |
| Trigger Queue Capacity | 20 |
| Trigger Queue Refill Level | 8 |
| Acknowledge Queue Size | 2 |
| Processing Mode | Concurrent |
| Max. Threads | 4 |

| Component Name | trgrPennDOT |
|----------------------------|--|
| Type | webMethods Trigger Service |
| Service Qualified Path | JNET_System_DataSources.triggers:trgrPennDOT |
| Subscription Document Type | JNET_Process_Address_Search.docs:QueryDocument |
| Trigger Queue Capacity | 20 |
| Trigger Queue Refill Level | 8 |
| Acknowledge Queue Size | 2 |
| Processing Mode | Concurrent |

| | |
|--------------|---|
| Max. Threads | 4 |
|--------------|---|

| | |
|----------------------------|---|
| Component Name | trgrPSP_CCHRI_ResponseNotify |
| Type | webMethods Trigger Service |
| Service Qualified Path | JNET_System_DataSources.triggers:trgrPSP_CCHRI_ResponseNotify |
| Subscription Document Type | JNET_Process_Address_Search.docs:QueryDocument |
| Trigger Queue Capacity | 20 |
| Trigger Queue Refill Level | 8 |
| Acknowledge Queue Size | 2 |
| Processing Mode | Concurrent |
| Max. Threads | 4 |

| | |
|----------------------------|--|
| Component Name | trgrERPrison |
| Type | webMethods Trigger Service |
| Service Qualified Path | JNET_System_DataSources.triggers:trgrERPrison |
| Subscription Document Type | JNET_Process_Address_Search.docs:QueryDocument |
| Trigger Queue Capacity | 20 |
| Trigger Queue Refill Level | 8 |
| Acknowledge Queue Size | 2 |
| Processing Mode | Concurrent |
| Max. Threads | 4 |

| | |
|----------------------------|--|
| Component Name | trgrPSPMN |
| Type | webMethods Trigger Service |
| Service Qualified Path | JNET_System_DataSources.triggers:trgrPSPMN |
| Subscription Document Type | JNET_Process_Address_Search.docs:QueryDocument |
| Trigger Queue Capacity | 20 |

| | |
|----------------------------|------------|
| Trigger Queue Refill Level | 8 |
| Acknowledge Queue Size | 2 |
| Processing Mode | Concurrent |
| Max. Threads | 4 |

| | |
|----------------------------|--|
| Component Name | trgrPSPRS |
| Type | webMethods Trigger Service |
| Service Qualified Path | JNET_System_DataSources.triggers:trgrPSPRS |
| Subscription Document Type | JNET_Process_Address_Search.docs:QueryDocument |
| Trigger Queue Capacity | 20 |
| Trigger Queue Refill Level | 8 |
| Acknowledge Queue Size | 2 |
| Processing Mode | Concurrent |
| Max. Threads | 4 |

| | |
|----------------------------|--|
| Component Name | trgrStateDOC |
| Type | webMethods Trigger Service |
| Service Qualified Path | JNET_System_DataSources.triggers:trgrStateDOC |
| Subscription Document Type | JNET_Process_Address_Search.docs:QueryDocument |
| Trigger Queue Capacity | 20 |
| Trigger Queue Refill Level | 8 |
| Acknowledge Queue Size | 2 |
| Processing Mode | Concurrent |
| Max. Threads | 4 |

| | |
|-----------------------|----------------------------|
| Component Name | trgrStatePBPP |
| Type | webMethods Trigger Service |

| | |
|----------------------------|--|
| Service Qualified Path | JNET_System_DataSources.triggers:trgrStatePBPP |
| Subscription Document Type | JNET_Process_Address_Search.docs:QueryDocument |
| Trigger Queue Capacity | 20 |
| Trigger Queue Refill Level | 8 |
| Acknowledge Queue Size | 2 |
| Processing Mode | Concurrent |
| Max. Threads | 4 |

| Component Name | trgrWebCPIN |
|----------------------------|--|
| Type | webMethods Trigger Service |
| Service Qualified Path | JNET_System_DataSources.triggers:trgrWebCPIN |
| Subscription Document Type | JNET_Process_Address_Search.docs:QueryDocument |
| Trigger Queue Capacity | 20 |
| Trigger Queue Refill Level | 8 |
| Acknowledge Queue Size | 2 |
| Processing Mode | Concurrent |
| Max. Threads | 4 |

| Component Name | trgrDLI |
|----------------------------|--|
| Type | webMethods Trigger Service |
| Service Qualified Path | JNET_System_DataSources.triggers:trgrDLI |
| Subscription Document Type | JNET_Process_Address_Search.docs:QueryDocument |
| Trigger Queue Capacity | 20 |
| Trigger Queue Refill Level | 8 |
| Acknowledge Queue Size | 2 |
| Processing Mode | Concurrent |

| | |
|--------------|---|
| Max. Threads | 4 |
|--------------|---|

Subscriber Services:

| Component Name | subscriberAOPC |
|------------------------|---|
| Type | Flow |
| Service Qualified Path | JNET_System_DataSources.services.subscribers:subscriberAOPC |
| Input Data | JNET_Process_Address_Search.docs:QueryDocument |
| Output Data | NA |
| Description | This flow service subscribes the query document from aggregation service publisher and query the AOPC, retrieves the results and stores in aggregation datastore. |

| Component Name | getPersonInfoFromAOPC |
|------------------------|--|
| Type | Flow |
| Service Qualified Path | JNET_System_DataSources.services.wrappers:getPersonInfoFromAOPC |
| Input Data | getPersonInfoFromAOPCInput |
| Output Data | getPersonInfoFromAOPCOutput |
| Description | This flow service is a wrapper service to call JDBC adapter service. |

| Component Name | sendQueryResultsToStore |
|------------------------|---|
| Type | Flow |
| Service Qualified Path | JNET_System_DataSources.services:sendQueryResultsToStore |
| Input Data | responseDoc, requestDoc, configInfo |
| Output Data | NA |
| Description | This flow service is wrapper service to call PutDataQueryResults webservice connector |

| | |
|------------------------|--|
| Component Name | DataAggregationInterface_PutDataQueryResults |
| Type | Flow |
| Service Qualified Path | JNET_Process_Address_Search.endpoints.consumer.Data_Aggregation_.connectors: DataAggregationInterface_PutDataQueryResults |
| Input Data | m:PutDataQueryResults, _url |
| Output Data | SOAP-FAULT |
| Description | This is a webservice connector to call the Dta aggregation webservice on JIES server to store the results document in datastore table. |

| | |
|------------------------|--|
| Component Name | subscriberDPW |
| Type | Flow |
| Service Qualified Path | JNET_System_DataSources.services.subscribers:subscriberDPW |
| Input Data | JNET_Process_Address_Search.docs:QueryDocument |
| Output Data | NA |
| Description | This flow service subscribes the query document from aggregation service publisher and query the DPW, retrieves the results and stores in aggregation datastore. |

| | |
|------------------------|---|
| Component Name | DPWRecipientAddressService |
| Type | Flow |
| Service Qualified Path | JNET_System_DPW.endpoints.DPWRecipientAddressEndPoint_.services: DPWRecipientAddressService |
| Input Data | tns:DPWInputDoc |
| Output Data | tns:DPWOutputDoc |
| Description | This flow service is used to query DPW application to get the person details and stores the results in datastore. |

| | |
|-----------------------|----------------------|
| Component Name | subscriberDRO |
|-----------------------|----------------------|

| | |
|------------------------|---|
| Type | Flow |
| Service Qualified Path | JNET_System_DataSources.services.subscribers:subscriberDRO |
| Input Data | JNET_Process_Address_Search.docs:QueryDocument |
| Output Data | NA |
| Description | This flow service subscribes the query document from aggregation service publisher and query the DRO databse, retrievees the results and stores in aggregation datastore. |

| | |
|------------------------|---|
| Component Name | getPersonInfoFromDRO |
| Type | Flow |
| Service Qualified Path | JNET_System_DataSources.services.wrappers:getPersonInfoFromDRO |
| Input Data | getPersonInfoFromDROWarrantInput |
| Output Data | getPersonInfoFromDROWarrantOutput |
| Description | This is a wrapper service to call JDBC Adapter service to get the person details. |

| | |
|------------------------|---|
| Component Name | subscriberERPrison |
| Type | Flow |
| Service Qualified Path | JNET_System_DataSources.services.subscribers:subscriberERPrison |
| Input Data | JNET_Process_Address_Search.docs:QueryDocument |
| Output Data | NA |
| Description | This flow service subscribes the query document from aggregation service publisher and query the ER Prison Databse, retrievees the results and stores in aggregation datastore. |

| | |
|------------------------|--|
| Component Name | getPersonInfoFromERPrison |
| Type | Flow |
| Service Qualified Path | JNET_System_DataSources.services.wrappers: |

| | |
|-------------|---|
| | getPersonInfoFromERPrison |
| Input Data | getPersonInfoFromCountyPrisonInput |
| Output Data | getPersonInfoFromCountyPrisonOutput |
| Description | This is a wrapper service to call JDBC Adapter service to get the person details. |

| | |
|------------------------|--|
| Component Name | transformCountyCodeToCountyName |
| Type | Flow |
| Service Qualified Path | JNET_System_DataSources.services.transformCountyCodeToCountyName |
| Input Data | countyCode |
| Output Data | countyName |
| Description | This flow service returns the county name based on county code. |

| | |
|------------------------|--|
| Component Name | subscriberERProbation |
| Type | Flow |
| Service Qualified Path | JNET_System_DataSources.services.subscribers:subscriberERProbation |
| Input Data | JNET_Process_Address_Search.docs:QueryDocument |
| Output Data | NA |
| Description | This flow service subscribes the query document from aggregation service publisher and query the ER Probation Database, retrieves the results and stores in aggregation datastore. |

| | |
|------------------------|--|
| Component Name | getPersonInfoFromERProbation |
| Type | Flow |
| Service Qualified Path | JNET_System_DataSources.services.wrappers: getPersonInfoFromERProbation |
| Input Data | getPersonInfoFromCountyProbationInput |
| Output Data | getPersonInfoFromCountyProbationOutput |

| | |
|-------------|---|
| Description | This is a wrapper service to call JDBC Adapter service to get the person details. |
|-------------|---|

| | |
|------------------------|---|
| Component Name | subscriberJTS |
| Type | Flow |
| Service Qualified Path | JNET_System_DataSources.services.subscribers:subscriberJTS |
| Input Data | JNET_Process_Address_Search.docs:QueryDocument |
| Output Data | NA |
| Description | This flow service subscribes the query document from aggregation service publisher and query the JTS Database, retrieves the results and stores in aggregation datastore. |

| | |
|------------------------|---|
| Component Name | getPersonInfoFromJTS |
| Type | Flow |
| Service Qualified Path | JNET_System_DataSources.services.wrappers:getPersonInfoFromJTS |
| Input Data | getPersonInfoFromJTSInput |
| Output Data | getPersonInfoFromJTSOutput |
| Description | This is a wrapper service to call JDBC Adapter service to get the person details. |

| | |
|------------------------|---|
| Component Name | subscriberPennDOT |
| Type | Flow |
| Service Qualified Path | JNET_System_DataSources.services.subscribers:subscriberPennDOT |
| Input Data | JNET_Process_Address_Search.docs:QueryDocument |
| Output Data | NA |
| Description | This flow service subscribes the query document from aggregation service publisher and query the CLEAN Upgrade Driver application, retrieves the results and stores in aggregation datastore. |

| | |
|------------------------|--|
| Component Name | PennDOTConsumerWrapper |
| Type | Flow |
| Service Qualified Path | JNET_System_DataSources.services.pennDOTConsumerHandler: PennDOTConsumerWrapper |
| Input Data | m:GetDriverStatus, User, OrgInfo |
| Output Data | m:GetDriverStatusResponse, SOAP-FAULT |
| Description | This is a wrapper service to call the PennDOT Driver webservice connector. |
| Component Name | samlConsumerHandler |
| Type | Flow |
| Service Qualified Path | JNET_System_DataSources.services.pennDOTConsumerHandler: samlConsumerHandler |
| Input Data | messageContext |
| Output Data | statusCode, faultMessage |
| Description | This is saml consumer handler for PennDOT Driver consumer webservice |

| | |
|------------------------|---|
| Component Name | subscriberDLI |
| Type | Flow |
| Service Qualified Path | |
| Input Data | JNET_Process_Address_Search.docs:QueryDocument |
| Output Data | NA |
| Description | This flow service subscribes the query document from aggregation service publisher and query the DLI employment application, retrieves the results and stores in aggregation datastore. |

| Component Name | DLIConsumerWrapper |
|------------------------|---|
| Type | Flow |
| Service Qualified Path | |
| Input Data | |
| Output Data | |
| Description | This is a wrapper service to call the DLI webservice connector. |

| Component Name | DLI |
|------------------------|---|
| Type | WSD |
| Service Qualified Path | |
| Binders | getEmploymentRecordsSOAPBinding |
| Operations | GetEmploymentRecords |
| Handler | samlConsumerHandler |
| Description | This is a consumer webservice for DLI on data power.. |

| Component Name | PennDOTDriver |
|------------------------|--|
| Type | WSD |
| Service Qualified Path | JNET_System_DataSources.endpoints.consumer:PennDOTDriver |
| Binders | DriverQuerySOAPBinding |
| Operations | GetDriverStatus |
| Handler | samlConsumerHandler |
| Description | This is a consumer webservice for PennDOT_Driver Provider webservice serve on PennDOT ISB server.. |

| Component Name | PSP_CLEAN_Query |
|----------------|------------------------|
| Type | WSD |

| | |
|------------------------|--|
| Service Qualified Path | JNET_System_DataSources.endpoints.consumer:PSP_CLEAN_Query |
| Binders | MessageServiceSoap |
| Operations | ReceiveNLETSMsg |
| Handler | NA |
| Description | This is a consumer webservice for PSP CLEAN Provider webservice serve on JentInquiry Srever. |

| | |
|------------------------|---|
| Component Name | subscriberPSPMN |
| Type | Flow |
| Service Qualified Path | JNET_System_DataSources.services.subscribers:subscriberPSPMN |
| Input Data | JNET_Process_Address_Search.docs:QueryDocument |
| Output Data | NA |
| Description | This flow service subscribes the query document from aggregation service publisher and query the PSP CLEAN, retrieve the results and stores in aggregation datastore. |

| | |
|------------------------|--|
| Component Name | mapQueryIDToControllID |
| Type | Flow |
| Service Qualified Path | JNET_System_DataSources.services.wrappers:mapQueryIDToControllID |
| Input Data | mapQueryIDToControllIDInput |
| Output Data | mapQueryIDToControllIDOutput |
| Description | This flow service is a wrapper service for calling JDBC Adapter service. |

| | |
|------------------------|--|
| Component Name | MessageServiceSoap_ReceiveNLETSMsg |
| Type | Flow |
| Service Qualified Path | JNET_System_DataSources.endpoints.consumer.PSP_CLEAN_Query_connectors:MessageServiceSoap_ReceiveNLETSMsg |

| | |
|-------------|--|
| Input Data | strNLETSMessage, _url |
| Output Data | ReceiveNLETSMsgResult, SOAP-FAULT |
| Description | ReceiveNLETSMsg webservice connector is used to call the PSP CLEAN Webservice to send the request message. |

| | |
|------------------------|--|
| Component Name | subscriberPSPRS |
| Type | Flow |
| Service Qualified Path | JNET_System_DataSources.services.subscribers:subscriberPSPRS |
| Input Data | JNET_Process_Address_Search.docs:QueryDocument |
| Output Data | NA |
| Description | This flow service subscribes the query document from aggregation service publisher and query the PSP CLEAN, retrieves the results and stores in aggregation datastore. |

| | |
|------------------------|--|
| Component Name | subscriberStateDOC |
| Type | Flow |
| Service Qualified Path | JNET_System_DataSources.services.subscribers:subscriberStateDOC |
| Input Data | JNET_Process_Address_Search.docs:QueryDocument |
| Output Data | NA |
| Description | This flow service subscribes the query document from aggregation service publisher and query the State DOC, retrieves the results and stores in aggregation datastore. |

| | |
|------------------------|---|
| Component Name | getPersonInfoFromStateDOC |
| Type | Flow |
| Service Qualified Path | JNET_System_DataSources.services.wrappers:getPersonInfoFromStateDOC |
| Input Data | getPersonInfoFromStateDOCInput |
| Output Data | getPersonInfoFromStateDOCOutput |

| | |
|-------------|---|
| Description | This is a wrapper service to call JDBC Adapter service to get the person details. |
|-------------|---|

| | |
|------------------------|--|
| Component Name | prepareStateDOCQuery |
| Type | Flow |
| Service Qualified Path | JNET_System_DataSources.services:prepareStateDOCQuery |
| Input Data | lastName, firstName, middleName, dob, ssn_1, ssn_2, sid |
| Output Data | query |
| Description | This flow service prepares the dynamic sql query based on the user input and this prepared query is passed to JDBC Adapter service to query the State DOC databse. |

| | |
|------------------------|--|
| Component Name | subscriberStatePBPP |
| Type | Flow |
| Service Qualified Path | JNET_System_DataSources.services.subscribers:subscriberStatePBPP |
| Input Data | JNET_Process_Address_Search.docs:QueryDocument |
| Output Data | NA |
| Description | This flow service subscribes the query document from aggregation service publisher and query the State PBPP retrieves the results and stores in aggregation datastore. |

| | |
|------------------------|---|
| Component Name | getPersonInfoFromStatePBPP |
| Type | Flow |
| Service Qualified Path | JNET_System_DataSources.services.wrappers:getPersonInfoFromStatePBPP |
| Input Data | getPersonInfoFromPBPPInput |
| Output Data | getPersonInfoFromPBPPOutput |
| Description | This is a wrapper service to call JDBC Adapter service to get the person details. |

| | |
|------------------------|---|
| Component Name | subscriberWEBCPIN |
| Type | Flow |
| Service Qualified Path | JNET_System_DataSources.services.subscribers:subscriberWEBCPIN |
| Input Data | JNET_Process_Address_Search.docs:QueryDocument |
| Output Data | NA |
| Description | This flow service subscribes the query document from aggregation service publisher and query the WebCPIN retrieves the results and stores in aggregation datastore. |

| | |
|------------------------|---|
| Component Name | getPersonInfoFromWEBCPIN |
| Type | Flow |
| Service Qualified Path | JNET_System_DataSources.services.wrappers:getPersonInfoFromWEBCPIN |
| Input Data | getPersonInfoFromWEBCPINInput |
| Output Data | getPersonInfoFromWEBCPINOutput |
| Description | This is a wrapper service to call JDBC Adapter service to get the person details. |

| | |
|------------------------|---|
| Component Name | getPersonSummeryFromWEBCPIN |
| Type | Flow |
| Service Qualified Path | JNET_System_DataSources.services.wrappers: getPersonSummeryFromWEBCPIN |
| Input Data | getPersonSmryFromWEBCPINInput |
| Output Data | getPersonSmryFromWEBCPINOutput |
| Description | This is a wrapper service to call JDBC Adapter service to get the person details. |

| | |
|-----------------------|-------------------------------|
| Component Name | subscribeToNCICMessage |
|-----------------------|-------------------------------|

| | |
|------------------------|---|
| Type | Flow |
| Service Qualified Path | JNET_System_DataSources.services.subscribers:subscribeToNCICMessage |
| Input Data | JNET_System_PSPCLEAN.docs:NCICMessageReplyDoc |
| Output Data | NA |
| Description | This subscriber service is used for subscribing the response message from PSP CLEAN webservice and received message is stored in aggregation datastore. |

| | |
|------------------------|--|
| Component Name | getQueryIDFromMappingTable |
| Type | Flow |
| Service Qualified Path | JNET_System_DataSources.services.wrappers:getQueryIDFromMappingTable |
| Input Data | getQueryIDInput |
| Output Data | getQueryIDOutput |
| Description | This is a wrapper service to call JDBC Adapter service. |

| | |
|------------------------|---|
| Component Name | parsePSPMNResponse |
| Type | Flow |
| Service Qualified Path | JNET_System_DataSources.services:parsePSPMNResponse |
| Input Data | NativeMessage |
| Output Data | PSPMNResponseList, validationError, noRecordFound |
| Description | This flow service is used to parse the PSP MN response to extract the desired fields. |

| | |
|------------------------|---|
| Component Name | parsePSPRSResponse |
| Type | Flow |
| Service Qualified Path | JNET_System_DataSources.services:parsePSPRSResponse |
| Input Data | NativeMessage |
| Output Data | dob, lastUpdatedDate, address, sid, name, soc, noRecordFound, |

| | |
|-------------|---|
| | validationError |
| Description | This flow service is used to parse the PSP RN response to extract the desired fields. |

| | |
|------------------------|--|
| Component Name | DataAggregationInterface_PutDataQueryResults |
| Type | Flow |
| Service Qualified Path | JNET_Process_Address_Search.endpoints.consumer.Data_Aggregation_connectors: DataAggregationInterface_PutDataQueryResults |
| Input Data | m:PutDataQueryResults, _url |
| Output Data | SOAP-FAULT |
| Description | PutDataQueryResults webservice connector is used to call the data aggregation webservice provider on JIES server to save the results to datastore table. |

Utility Services:

| | |
|------------------------|--|
| Component Name | getUserandOrgInfo |
| Type | Flow |
| Service Qualified Path | JNET_Common.services.samlTokenHandler:getUserandOrgInfo |
| Input Data | soapHeaders |
| Output Data | userName, orgInfo |
| Description | This utility service is used to extract the user and organization information from SOAP Headers. |

| | |
|------------------------|---|
| Component Name | getUserAuthorizations |
| Type | Flow |
| Service Qualified Path | JNET_Common.services.samlTokenHandler:getUserAuthorizations |
| Input Data | soapHeaders |
| Output Data | UserAuthorizations |

| | |
|-------------|--|
| Description | This utility service is used to extract the user permissions to datasources. |
|-------------|--|

| | |
|------------------------|--|
| Component Name | generateUUID |
| Type | Java Service |
| Service Qualified Path | JNET_Common.services.uuid:generateUUID |
| Input Data | NA |
| Output Data | uuid |
| Description | This utility service is used to generate the UUID. |

| | |
|------------------------|--|
| Component Name | throwError |
| Type | Java Service |
| Service Qualified Path | JNET_Common.services.misc:throwError |
| Input Data | errorMessage |
| Output Data | NA |
| Description | This utility service is used to throw an exception manually. |

| | |
|------------------------|---|
| Component Name | publishAuditLogDoc |
| Type | Flow |
| Service Qualified Path | JNET_Common.services.jnetAsynchAuditLog.services:publishAuditLogDoc |
| Input Data | auditLogRequest |
| Output Data | NA |
| Description | This utility service is used to publish the audit log document. |

| | |
|------------------------|---|
| Component Name | publishTxnLogDoc |
| Type | Flow |
| Service Qualified Path | JNET_Common.services.jnetTransactionLogging.services:publishTxnLogDoc |

| | |
|-------------|---|
| Input Data | txnLogDoc |
| Output Data | NA |
| Description | This utility service is used to publish the transaction log document. |

| | |
|------------------------|---|
| Component Name | publishTxnLogUpdateDoc |
| Type | Flow |
| Service Qualified Path | JNET_Common.services.jnetTransactionLogging.services: publishTxnLogUpdateDoc |
| Input Data | updateTxnLog |
| Output Data | NA |
| Description | This utility service is used to publish the updated audit log document. |

| | |
|------------------------|--|
| Component Name | publishAuditLogDocForCatchBlock |
| Type | Flow |
| Service Qualified Path | JNET_Common.services.jnetAsynchAuditLog.services: publishAuditLogDocForCatchBlock |
| Input Data | lastError |
| Output Data | NA |
| Description | This utility service is used to publish the audit log document from catch block. |

| | |
|------------------------|--|
| Component Name | publishTxnLogDocForCatchBlock |
| Type | Flow |
| Service Qualified Path | JNET_Common.services.jnetTransactionLogging.services: publishTxnLogDocForCatchBlock |
| Input Data | lastError |
| Output Data | NA |

| | |
|-------------|--|
| Description | This utility service is used to publish the transaction log document from catch block. |
|-------------|--|

| | |
|------------------------|--|
| Component Name | getErrorClassInfo |
| Type | Flow |
| Service Qualified Path | JNET_Common.services.jnetErrorClassLookup.services:getErrorClassInfo |
| Input Data | getErrorClassInput |
| Output Data | getErrorClassOutput |
| Description | This is a wrapper service to call the JDBC adapter service to get the error class information from error class lookup table in audit log database. |

| | |
|------------------------|--|
| Component Name | commonErrorHandler |
| Type | Flow |
| Service Qualified Path | JNET_Common.services.jnetErrorClassLookup.services:commonErrorHandler |
| Input Data | lastError,JNETModuleName,serviceName,errorHandlerType,userTrackingID,description, severity, notify, errorClass |
| Output Data | JNETUUID, JNETErrorDescription |
| Description | commonErrorHandler utility service call the exception handling service and provides required metada data for exceptionhandlingservice. |

| | |
|------------------------|---|
| Component Name | getErrorClass |
| Type | JDBC Adapter Service |
| Service Qualified Path | JNET_Common.services.jnetErrorClassLookup.services:getErrorClass |
| Input Data | getErrorClassInput |
| Output Data | getErrorClassOutput |
| Description | This jdbc adapter serive used to get the error class from error class lookup table. |

| Component Name | handleExceptions |
|------------------------|--|
| Type | Flow Service |
| Service Qualified Path | JNET_System_DataSources.services:handleExceptions |
| Input Data | lastError, requestDoc, configInfo, JNETModuleName, serviceName, errorHandlerType, dataSourceName |
| Output Data | NA |
| Description | This utility service is used for exception handling. |